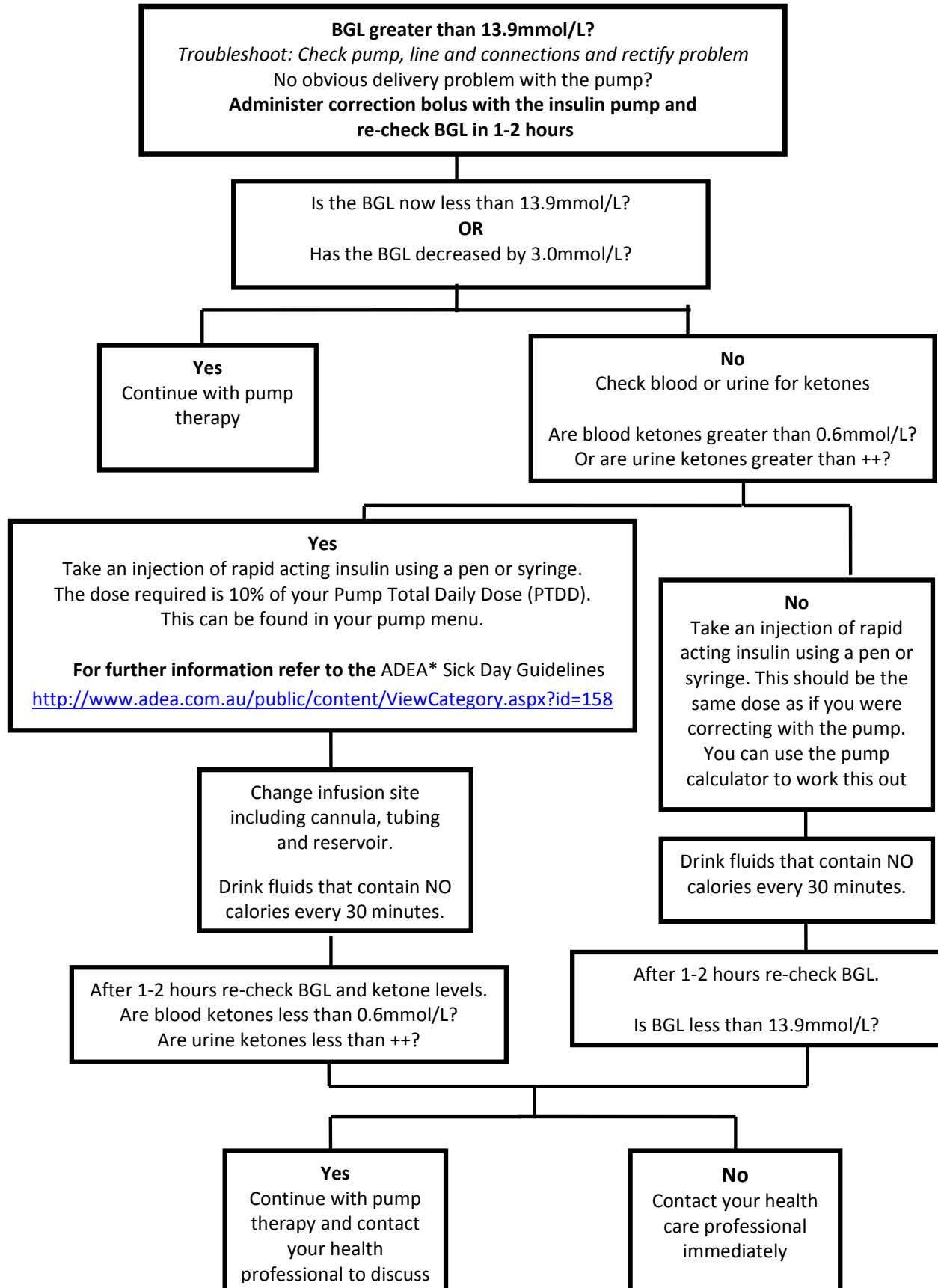


Management of Hyperglycaemia



- Always verify Continuous Glucose Monitoring System readings with glucose meter readings before making treatment changes. *ADEA: Australian Diabetes Educators Association

THE MANAGEMENT OF HYPERGLYCAEMIA

Things to remember if a single Blood Glucose Level (BGL) is above 13.9mmol/L:

- The insulin pump administers rapid acting insulin; therefore there is no long acting insulin on board to act as a backup if the pump fails to deliver insulin. Therefore steps to reduce BGL must be taken *immediately*.
- If you are alerted by the high BGL alarm as a result of wearing continuous glucose monitoring technology, verify the BGL by using a blood glucose meter.
- Could the high BGL reading be due to a pump delivery problem?
 - Is the pump in alert mode? E.g. suspended, low battery or low reservoir.
 - Are the cannula and line correctly aligned?
 - Are there any air bubbles or kinks visible in the line?
 - Is the reservoir correctly inserted into the pump?
 - Has insulin leaked at the cannula site or is the cannula site inflamed?
- You will usually require extra insulin during periods of illness, even if you are not eating or experiencing diarrhoea or vomiting. Extra insulin should be rapid acting and be in addition to your usual insulin dose. Refer to the ADEA guidelines for further instructions on managing sick days- <http://www.adea.com.au/public/content/ViewCategory.aspx?id=158> It is important to measure your ketones during the time you are unwell – even if your BGL are not elevated.
- Speak to a member of your diabetes team about a ‘sick day action plan’. It is important to be prepared.
- Any pump malfunction must be reported immediately to the pump company. In the event of a pump malfunction you will need to resume insulin pen injections. Therefore it is essential that you:
 - Keep a record of your insulin doses prior to commencing insulin pump therapy
 - Ensure your prescriptions of both long acting (Lantus, Levemir) and rapid acting insulin (Novorapid, Apidra, Humalog) are up to date.

Always consult your health care professional with any questions or concerns.